

TECHNICAL DATA

DRY COOLER (5) WH2390.BN D/02 V QRAF

Number of circuits 114

PERFORMANCE (SINGLE UNIT)

Requested Capacity	460,00 kW	Ratio	2,4 %
Real Capacity	471,00 kW		

TUBE SIDE

Fluid (10)	PROPYLENE GLYCOL 40%		
Inlet Fluid Temp.	48,0 °C	Outlet Fluid Temp.	42,9 °C
Fluid flow rate	85,30 m³/h	Fluid Velocity	1,9 m/s
Massic Fluid Flow	86678 kg/h	Pressure drops	43 kPa

AIR SIDE

Inlet Air Temp [MAX]	32,0 °C	Outlet Air Temp.	41,5 °C
Inlet relative hum.	50,0 %	Outlet relative hum.	29,6 %
		Altitude	0 m
		ESP	0,0 Pa
		Flow Direction	Vertical
Air Flow	150365 m³/h	Air Velocity	4,07 m/s

FANS TECHNICAL DATA

ERP	Yes	UL	No
Fan Number	6 N°	Fan Diameter	900 mm
Phases-Voltage-Frequency	3-400-50 N°/Volt/Hz	Fan type	34050H91ACB2
Rpm [Nominal data]	893 Rpm	Link	Delta
Power x 1 [Nominal data]	3600 Watt	Current x 1 [Nominal data] (1)	7,20 A
Rpm [Working point]	893 Rpm	Rpm rate [working point / nominal]	100 %
Power x 1 [Working point]	3600 Watt	Current x 1 [Working point] (1)	7,20 A
Total Power x n° [Working point]/ [Nominal data]	21600/21600 Watt	Total Current x n° [Working point]/ [Nominal data]	43,20/43,20 A
Efficiency Energy Class:nominal calculation Water 40-35°C/Air 25°	E	Efficiency Energy Class:calculation on the working point	E

FANS NOISE DATA (7)

Sound Pressure Level (4) [Working point]	67 dB(A)	Sound Power Level (4) [Working point]	99 dB(A)
At the distance of	10 m	in accordance with EN 13487/EN ISO 3744 (7)	

HEAT EXCHANGER DATA (3)

Fin Material (2)	Aluminium Turbo	Tubes Material	Copper
Fin Spacing	2,1 mm	Internal Volume	160,0 dm³
Fin Thickness	0,1 mm	Casing material	Galvanized steel painted
Surface	680,0 m²	Number of passes	2
Inlet Connection	2x4"	Connections	Same side
Outlet Connection	2x4"	Fluid Category	Group 2
Max Pressure Design	10 bar		

DIMENSIONS AND WEIGHT (3)

Length	5030 mm	Weight (3)	1082 kg
Width	2400 mm	Number of fixing point	8
Height	1565 mm	LDM (Approximate data)	1,677 m

SOUND POWER LEVEL

	Tot.	63Hz	125Hz	250Hz	500Hz	1kHz	2kHz	4kHz	8kHz
Δ [dB(A)]	87	54	66	72	81	83	82	79	69

Data refers to one fan. IMPORTANT: the tolerance in any single octave band is +/-5dB. The tolerance in the overall dB(A) level is +/- 2dB.

In case of AC fans working point is defined by fan supplier in nominal curve (delta or star). In case of EC fans is simulated on working point of unit.

ThermoKey

Heat Exchange Solutions

Via dell'industria 1

33061 Rivarotta di Rivignano di Teor (UD) - ITALY

Tel.: +39/0432772300 Fax.: +39/043277973

Company -

Attention of

City

Telephone

Fax

Date 23/10/2018

Sw Version 180918

Offer SQ 18002492 - Rev. 00

Reference -

Position 003

DRY COOLER WH2390.BN D/02 V QRAF

ACCESSORIES

CODE	DESCRIPTION	S/NS	PRICE € (EUR)	NET € (EUR)
IMB	Packing			
VENTTRI	Three phase fan 'T'			
CBLQ	Wiring with electrical panel 'Q'			
RGTFDL	Phase cut speed controller (D) 'R'			
AMM_TAV	Shock absorbers Table 'A'			
FSON	Aluminium slip on flanges (one pair) 'F'			

WARNING

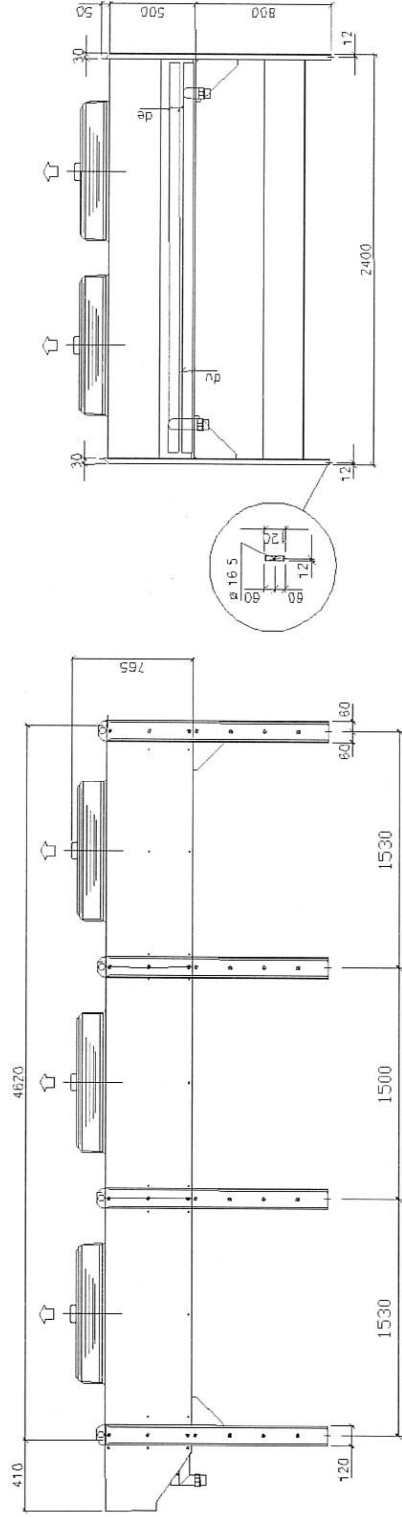
An inverter different from the one proposed by Thermokey must have omni polar sinusoidal filters, between phase and phase and phase and ground.

(*) Attention: Please check with Thermokey the conformity of minimal operating temperature of the selected equipment (fans, cables, ...)

For any support please contact our Sales Department

Gross Unit Price	€ (EUR)	Offer validity	60 Days
Accessories Price	€ (EUR)	Lead time (9)	to be defined
Total Gross Price	€ (EUR)	Thermokey sales conditions are available on the website	
Discount	%	www.thermokey.com	
Net price of the unit	€ (EUR)		
Net price of the accessories	€ (EUR)		
Total Net Price	€ (EUR)		
Number of units			
Total Net Price	€ (EUR)		

Model: WH2390.BN D/02 V QRAF



Attention: Drawing and dimensions not valid for all accessory options!

The overall dimensions on the datasheet refer only to the unit without regulation (For more detailed information refer to Electrical box Manual). In the units with horizontal air flow the standard position of the connections is left looking at the finned pack (right looking at the fans).

ThermoKey		Company	-	Date	23/10/2018
Heat Exchange Solutions		Attention of		Sw Version	180918
Via dell'Industria 1		City		Offer	SQ 18002492 - Rev. 00
33061 Rivarotta di Rivignano di Teor (UD) - ITALY		Telephone		Reference	-
Tel.: +39/0432772300 Fax.: +39/043277973		Fax		Position	003
CONNECTIONS					
Inlet Connections	2x4"				
Outlet Connections	2x4"				